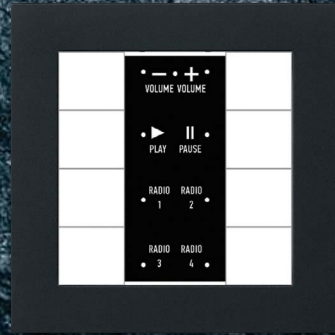


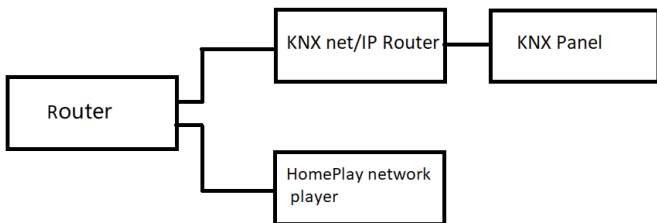
airScope KNX Push Buton



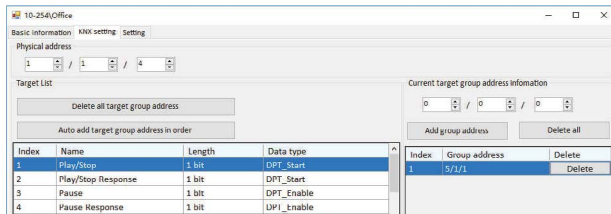
airScope KNX Push Buton

### KNX Setting

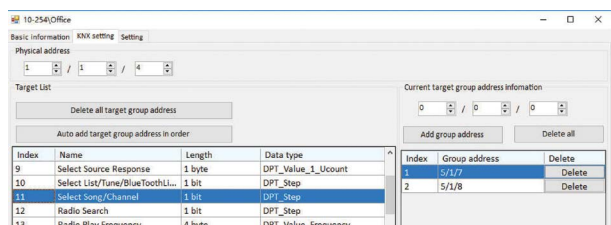
**Connection:** If you want to control the HomePlay network player by KNX panel, the HomePlay network and the KNX panel should connect to the same router. For the connection, please refer to the following wiring diagram.



**Physical address:** Fill in the physical address of HomePlay network player.  
**Play/stop:** Add a group address for it, the length is 1 bit, ON command is for play, OFF command is for stop.

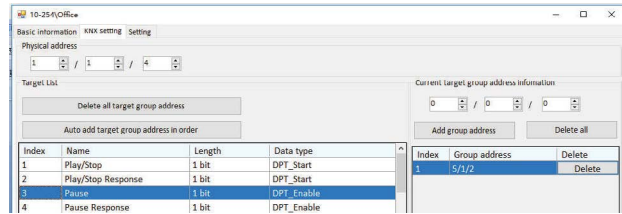


**Volume Step:** Add two group address for it, one group address is for increasing volume, the other one is for reducing volume, ON command is for increasing volume, OFF command is for reducing volume.



airScope KNX Router

**Pause:** Add a group address for it, the length is 1 bit, ON command is for pause.



**Audio Mute:** Add a group address for it, the length is 1 bit, ON command is for mute.

