

# WiFi Push High Quality Active Ceiling Speakers

**GSW6 (WiFi) / GSW6 (WiFi+POE)**



# Contents

Welcome.....	1
Warning.....	1
Installation Environment.....	2
Important safety instructions.....	2
Product Function Description.....	3
Black panel.....	4
WIFI Connect.....	5
Use of Local Songs and Internet Radio.....	7
Line input switching.....	7
FIT GS6L (WIFI) Technical parameters.....	8
FIT GS6L (WIFI POE) Technical parameters.....	9

## Welcome


A personal welcome to you from the management and employees of DEKEN global.

Thanks you for choosing our high quality product, we will always provide innovative, advanced, reliable products like before.


We are sincerely trust these products will provide years of satisfactory service, but if anything is not to your complete satisfaction, we will endeavor to make things right.

Welcome to DEKEN again, and thank you for becoming part of our worldwide extended family!


## Warning




**CAUTION**  
 RISK OF ELECTRIC  
 SHOCK DON'T OPEN



CAUTION: TO REDUCE THE RISK OF ELECTRIC SHOCK,  
DO NOT REMOVE COVER (OR BACK).  
NO USER-SERVICEABLE PARTS INSIDE.  
REFER SERVICING TO QUALIFIED SERVICE PERSONNEL.



This symbol is intended to alert the user to the presence of uninsulated "dangerous voltage" within the product's enclosure that may be of sufficient magnitude to constitute a risk of electric shock to persons.




This symbol is intended to alert the user to the presence of important operation and maintenance (servicing) instructions in the literature accompanying the appliance.

Caution: To prevent electric shock do not use this (polarized) plug with an extension cord, receptacle or other outlet unless the blades can be fully inserted to prevent blade expo-sure.

**WARNING**

To prevent fire or shock hazard, do not expose the unit to rain or moisture.

Attentions: Pour prévenir les chocs électriques ne pas utiliser cette fiche polarisée avec un prolongateur, une prise de courant on une autre sortie de courant, sauf si les lames peuvent être insérées à fond sans en laisser aucune partie à découvert.

- \* For the terminals marked with symbol of  may be of sufficient magnitude to constitute a risk of electric shock. The external wiring connected to the terminals requires installation by an instructed person or the used of ready-made leads or cords.
- \* The apparatus shall not be exposed to dripping or splashing and that objects filled with liquids, such as vases, shall not be placed on apparatus.
- \* The appliance coupler is used as disconnect device, the disconnect device shall remain readily operable.
- \* Protective earthing terminal. The apparatus should be connected to a mains socket outlet with a protective earthing connection.
- \* Increase the minimum distance of the prototype to the surrounding environment.
- \* no naked flame sources, such as lighted candles, should be placed on the apparatus;
- \* The use of apparatus in tropical climates.
- \* The use of apparatus in moderate climates.

- \* Do not install this equipment in a confined space such as a book case or similar unit.
- \* The apparatus shall not be exposed to dripping or splashing and no objects filled with liquids, such as vases, shall be placed on the apparatus.
- \* Worded: "WARNING FOR YOUR PROTECTION PLEASE READ THE FOLLOWING-WATER AND MOISTURE: Unit should not be used near water(e.g. near a bathtub, washbowl, kitchen sink, laundry tub, in a wet basement, or near a swimming pool, etc). Care should be taken so that objects do not fall and liquids are not spilled into the enclosure through openings."

**Service Instructions**

- \* Worded: "Caution: These servicing instructions are for use by qualified service personnel only. To reduce the risk of electric shock, do not perform any servicing other than that contained in the operating instructions unless you are qualified to do so."
- \* Location: Instruction Manual.

**NOTE :** This equipment has been tested and found to comply with the limits for a Class A digital device, pursuant to Part 15 of the FCC Rules. These limits are designed to provide reasonable protection against harmful interference when the equipment is operated in a commercial environment. This equipment generates, uses, and can radiate radio frequency energy and, if not installed and used in accordance with the instruction manual, may cause harmful interference to radio communications. Operation of this equipment in a residential area is likely to cause harmful interference in which case the user will be required to correct the interference at his own expense.

## Installation Environment

Installation this system is not difficult and complex. But you still need to spend some time to read this manual and ensure the connection and installation is exact.

Never place this product in an environment which could alter its performance or reduce its service life. Such environments usually include high levels of heat, dust, moisture, and vibration.

## Important Safety Instructions



1. Read these instructions.
2. Keep these instructions.
3. Heed all warnings.
4. Follow all instructions.
5. Do not use this apparatus near water.
6. Clean only with dry cloth.
7. Do not block any ventilation openings. Install in accordance with the manufacturer's instructions.
8. Do not install near any heat sources such as radiators, heat registers, stoves, or other apparatus (including amplifiers) that produce heat.
9. Do not defeat the safety purpose of the polarized or grounding-type plug. A polarized plug has two blades with one wider than the other. A grounding type plug has two blades and a third grounding prong. The wide blade or the third prong are provided for your safety. If the provided plug does not fit into your outlet, consult an electrician for replacement of the obsolete outlet.
10. Protect the power cord from being walked on or pinched particularly at plugs, convenience receptacles, and the point where they exit from the apparatus.
11. Only use attachments/accessories specified by the manufacturer.
12. Use only with the cart, stand, tripod, bracket, or table specified by the manufacturer, or sold with the apparatus. When a cart is used, use caution when moving the cart/apparatus combination to avoid injury from tip-over.
13. Unplug this apparatus during lightning storms or when unused for long periods of time.
14. Refer all servicing to qualified service personnel. Servicing is required when the apparatus has been damaged in any way, such as power-supply cord or plug is damaged, liquid has been spilled or objects have fallen into the apparatus, the apparatus has been exposed to rain or moisture, does not operate normally, or has been dropped.

### - Avoid excessive heat, humidity, dust and vibration

Keep the unit away from locations where it is likely to be exposed to high temperatures or humidity-such as near radiators, stoves, etc. Also avoid locations which are subject to excessive dust accumulation, or to vibration that could cause mechanical damage.

### - Avoid physical shocks

Strong physical shocks to the unit may cause damage. Handle the unit with care.

### - Do not open the case or attempt repairs or modifications yourself

This product contains no user-serviceable parts. Refer all maintenance to qualified service personnel. Opening the case and/or tampering with internal circuitry voids the warranty.

### - Always power off before making connections

Always turn the AC mains OFF before connecting or disconnecting cables. This is important to prevent damage to the unit itself as well as other connected equipment.

### - Handle cables carefully

Always plug and unplug cables (including the AC mains power cord) by gripping the connector, not the cord.

### - Clear with a soft dry cloth

Never use solvents such as benzine or paint thinner to clean the unit. Wipe clean with a soft, dry cloth.



## Product Function Description:

1. Support Airplay, DLNA, QPlay and other protocols to achieve LAN push play via WIFI or network cable.
2. Get rid of the traditional wiring, a wire to complete the installation and deployment (WIFI connection, only need to connect the power cord; or can be connected to the device through a POE network cable).
3. WIFI, BT and LINE-IN (line-in) three kinds of audio sources, use mobile phone APP to switch freely.
4. The output 24bit/48Khz sampling rate, the use of high-definition digital amplifier, with the crossover, to achieve the ultimate audio experience effect of powerful bass shock, treble penetration.
5. With amplifier output port can be connected to the sub box to form a master and a pair of stereo system (with a FIT GS6L composed of a left channel and a right channel, the total power of 60W); or one tow three (with 3pcs FIT GS6L composed of two left channel and two right channel, the total power of 100W) high-quality stereo playback.
6. Multi-room control function, add multiple FIT WF6L to your network, you can play different music or the same music through the APP respectively, to form a wireless multi-room whole-house audio system (multi-room), which will provide you with a new experience to play and enjoy your music.

Speaker unit with bright blue paper cone, ultra-narrow bezel magnetic mask design style; internal use of high-quality coaxial unit design, the configuration of the development of engineering carefully debugged crossover, so that the level of bass and treble is more distinct, the sound is more delicate, widely used in villas, gymnasiums, exhibition halls, meeting rooms, brand-name shops, high-grade restaurants, and other places in pursuit of sound quality.

## Black panel

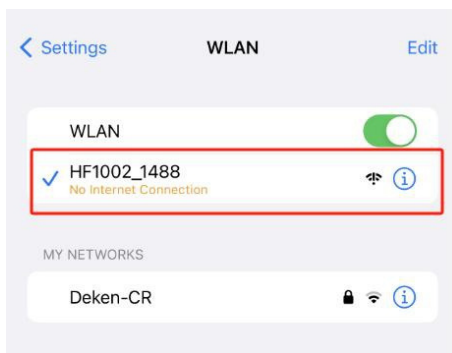


- 1、 2 channel power output connector, for connecting speakers, constant resistance output, it is recommended to use the same specification speakers to achieve the best use effect.
- 2、 Bass source output connector.
- 3、 Local audio input connector.
- 4、 WIFI pairing reset button, long press for 5 seconds to restore factory settings.
- 5、 10M/100M network port for connecting to LAN; POE48V power supply function can be customised.
- 6、 DC power interface, used to access 24V DC power supply.

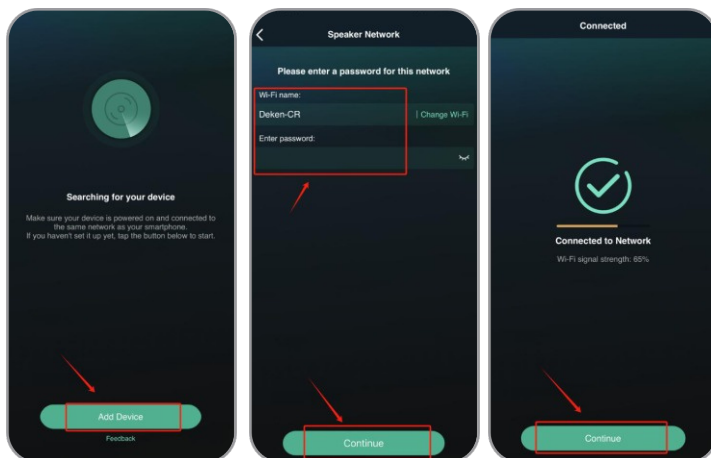
## WIFI Connect

1.First, search for and download the 'MUZO Player' APP in your browser. iOS users can search for the 'Audio System' App or 'Legacy Player' APP in the App Store and download and install the app. The operation is similar to the former.

2.Open your mobile phone's 'Settings', find 'WIFI' and open it, then find 'HF1002\_XXXX' and connect it, then find 'Privacy' and open 'Location Services' .



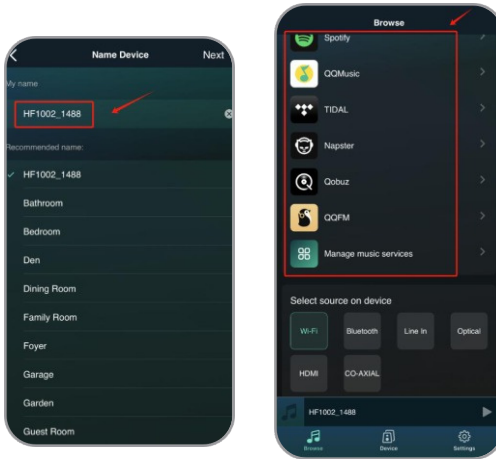
3.Then open the APP will show 'a device has been found' and click 'add device' will enter the wireless network connection interface, select the network, enter the password and click 'continue' . 'The wireless network will be connected automatically.



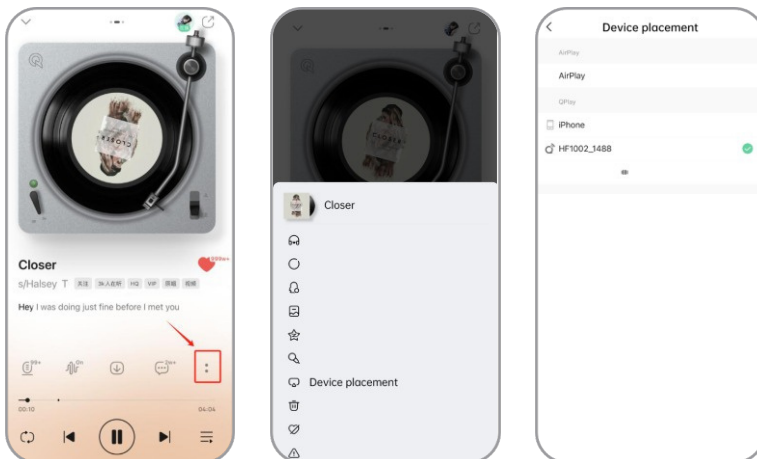
## WIFI Connect

4. After successful connection, click 'Continue' enter to the 'Device Naming' interface and name it arbitrarily, then click 'Next'.

5. Enter APP music play mode, slide the menu to the right to enter the software player selection, you can choose any one to play songs.



Then open the player, and then click on the bottom right ':' will appear a menu interface (as shown in the figure) and then click on the 'device placement' and then select your device name can play the songs.



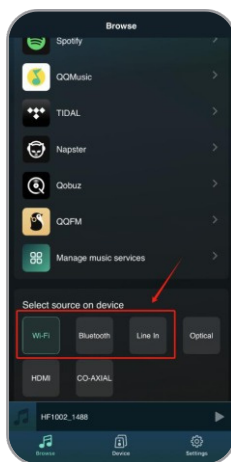


## Use of Local Songs and Internet Radio

- ① Internet radio: first enter the APP player mode, slide the menu to the right to enter the software player selection, select any one of the Internet radio station to play songs. First open the player to select the radio station and then select your favourite programme (or song) can be played directly!
- ② Local songs: first enter the APP player mode, slide the menu to the right to enter the software player selection, and then select 'My Music or My Favourites' can directly play the songs in the mobile phone!

## Line input switching

First, enter the APP player mode, slide the menu to the right to enter the software player selection, and then select BT, WIFI and line three kinds of input, you can switch freely!



## Specification:

Model	FIT GS6L (WIFI)
Network interface	External standard RJ45, 10M/100M network port
Wireless parameters	Supports 802.11b/g/n wireless networks
Input Power	External power supply DC24V-5A
Paired reset button	Press and hold for 5 seconds to restore factory settings
Local Audio Input	200mV Rms
Unit Rated Impedance	8Ω
Audio input	BT5.0、AUX IN
Network push	WIFI 2.4G and LAN
Music streaming protocol	Airplay、DLNA、QPlay
Audio format	MP3/AAC/FLAC/ALAC/WMA/APE/WAV/OGG
Music source	Tunein / iHeartRadio/TIDAL/Napster/Qobuz
Operating voltage	DC24V-5A
Output power	50W*2 (DC power supply)
Frequency range	55Hz-22KHz
Materials	Panel&Backshell:ABS,Grid:Iron
Color	Unit: Blue, Frame: Black, Mask: White
Speaker unit	6.5" Bass + 1" Tweeter
Sensitivity 1w@1m	88dB
External Dimension(mm)	Ø220*110H mm
Hole Size(mm)	Ø205mm
Installation depth(mm)	115mm
Mounting	4-Jaw Swivel Mounting Lugs
Net weight (kg)	1.5kg

## Specification:

## WIFI Push High Quality Active Ceiling Speakers

Model	FIT GS6L (WIFI POE)
Network interface	External standard RJ45, 10M/100M network port
Wireless parameters	Supports 802.11b/g/n wireless networks
Input Power	48V POE++ or external power supply DC 24V-5A
Paired reset button	Press and hold for 5 seconds to restore factory settings
Local Audio Input	200mV Rms
Unit Rated Impedance	8Ω
Audio input	BT5.0、AUX IN
Network push	WIFI 2.4G and LAN
Music streaming protocol	Airplay、DLNA、QPlay
Audio format	MP3/AAC/FLAC/ALAC/WMA/APE/WAV/OGG
Music source	Tunein / iHeartRadio/TIDAL/Napster/Qobuz
Operating voltage	48V POE++ (IEEE802.3bt) or optional DC24V-5A adapter
Output power	30W*2 (POE++ powered) or 50W*2 (DC powered)
Frequency range	55Hz-22KHz
Materials	Panel&Backshell:ABS,Grid:Iron
Color	Unit: Blue, Frame: Black, Mask: White
Speaker unit	6.5" Bass + 1" Tweeter
Sensitivity 1w@1m	88dB
External Dimension(mm)	Ø220*110H mm
Hole Size(mm)	Ø205mm
Installation depth(mm)	115mm
Mounting	4-Jaw Swivel Mounting Lugs
Net weight (kg)	1.5kg

